

# Planning for the Future

Loyalsock Valley Elementary School  
Lyter Elementary School



# MASD Listening Tour

- Purpose of these presentations is to provide a *summary of the feasibility study, review the options, and listen to public comment.*
- *Decisions have been made to eliminate some of the options.*
- Most questions from the public will not be answered tonight. We realize some questions may need to have input from multiple people including financial advisors and our architectural firm.
- Crabtree Rohrbach and Associates have granted permission to use materials from any and all presentations they have provided.
- Everything you see tonight is a *summary from multiple sources* that can be found on our website.



## Montoursville Area School District

Pride • Excellence • Tradition

[Home](#)[District ▾](#)[Departments ▾](#)[Schools ▾](#)[Students ▾](#)[Parents ▾](#)[WOL ▾](#)[District Calendar](#)[Search](#)

### District-Wide Facility Study

Montoursville Area School District is currently undergoing a District-Wide Facility Study. Information related to this study can be found below:

#### Recorded Public Meetings:

2020:

[Public Feasibility Deficiency Report/Meeting #1](#)

[Public Feasibility Deficiency Report/Meeting #2](#)

[Public Options Presentation/Meeting #1](#)

2022:

[MASD School Board Meeting – 3/8/2022](#)

[MASD School Board Work Session – 3/22/2022](#)

#### Informational Documents:

2020:

[MASD Facility Study](#)

[MASD Facility Study Presentation](#)

[10 Construction Options Summary Public](#)

[MASD District Wide Facility Study 7-14-20](#)

2022:

[MASD Facility Study \(Updated 3-8-2022\)](#)

#### District calendar

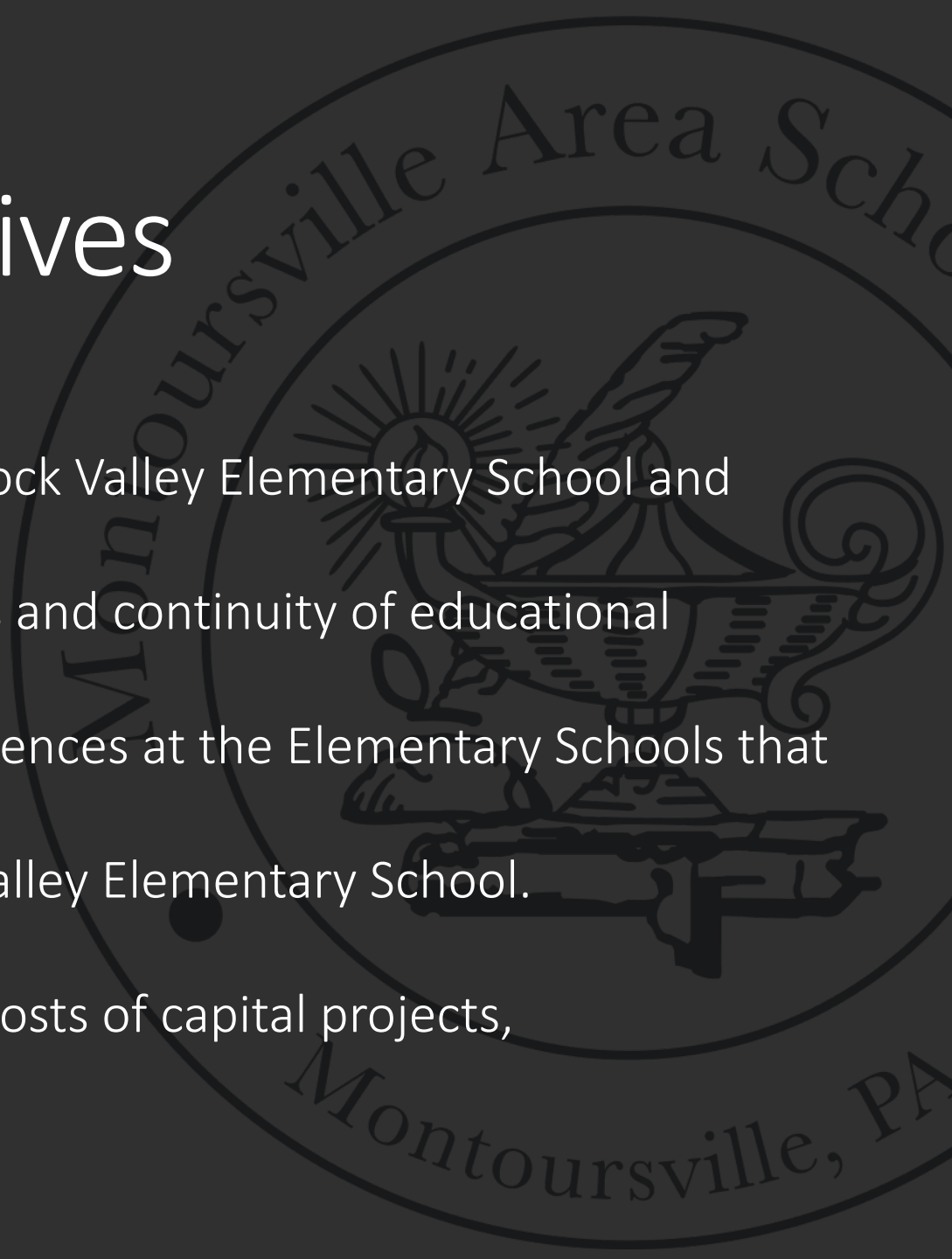
< 2022 >						
May						
Month ▾						
S	M	Tu	W	Th	F	S
1	2	3	4	5	6	7
8	9	10	11	12	13	14
15	16	17	18	19	20	21
22	23	24	25	26	27	28
29	30	31				

#### Upcoming Events

- > School Board Meeting
  - 🕒 7:00 pm
  - 📅 May 10, 2022
- > McCall Chorus Concert - May 11, ...
  - 🕒 3:02 pm
  - 📅 May 11, 2022

# MASD Goals and Objectives

- Provide **equity** among elementary grade students.
- **Improve** the existing facility infrastructure at Loyalsock Valley Elementary School and Lyter Elementary School.
- **Improve** the efficiency and consistency of resources and continuity of educational delivery.
- **Provide** 21st Century educational spaces and experiences at the Elementary Schools that reflect the curriculum.
- Address **safety and security concerns** at Loyalsock Valley Elementary School.
- Provide **air conditioning** at all schools.
- Develop **fiscally responsible** solutions that address costs of capital projects, transportation, staffing, and operations.



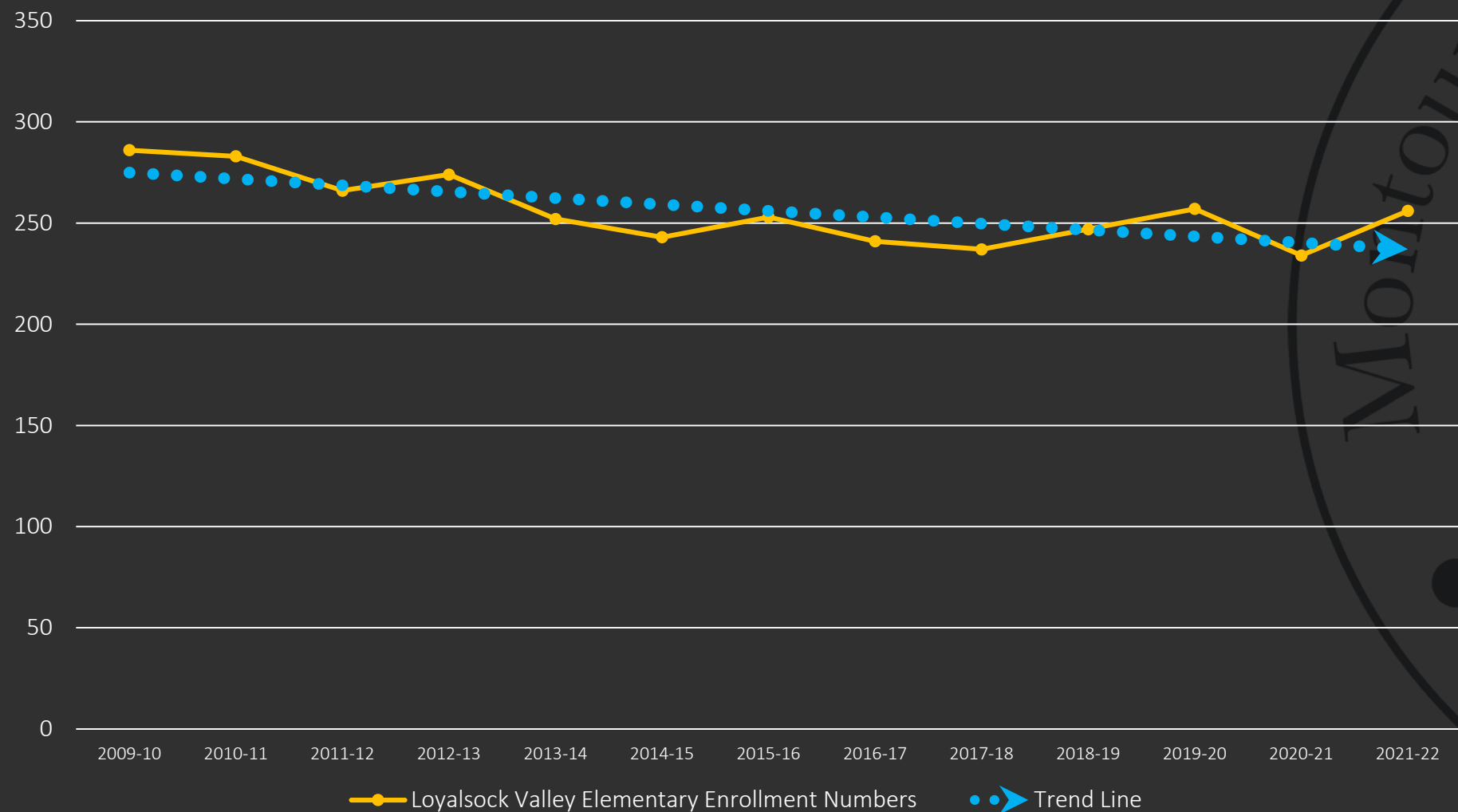
# District Facilities

	Original Date of Construction	Most Recent Renovation / Addition	Years Since Last Renovation / Addition
Loyalsock Valley Elementary	1961	1983	39
Lyter Elementary	1958	1998	24
C.E. McCall Middle School	1972	2010	12
Montoursville Area High School	1931	2017	5

# Enrollment Trends

Loyalsock Valley Elementary School Functional Building Capacity = 293

Loyalsock Valley Elementary Enrollment Numbers\*



School Year	Enrollment
2009-10	286
2010-11	283
2011-12	266
2012-13	274
2013-14	252
2014-15	243
2015-16	253
2016-17	241
2017-18	237
2018-19	247
2019-20	257
2020-21	234
2021-22	256

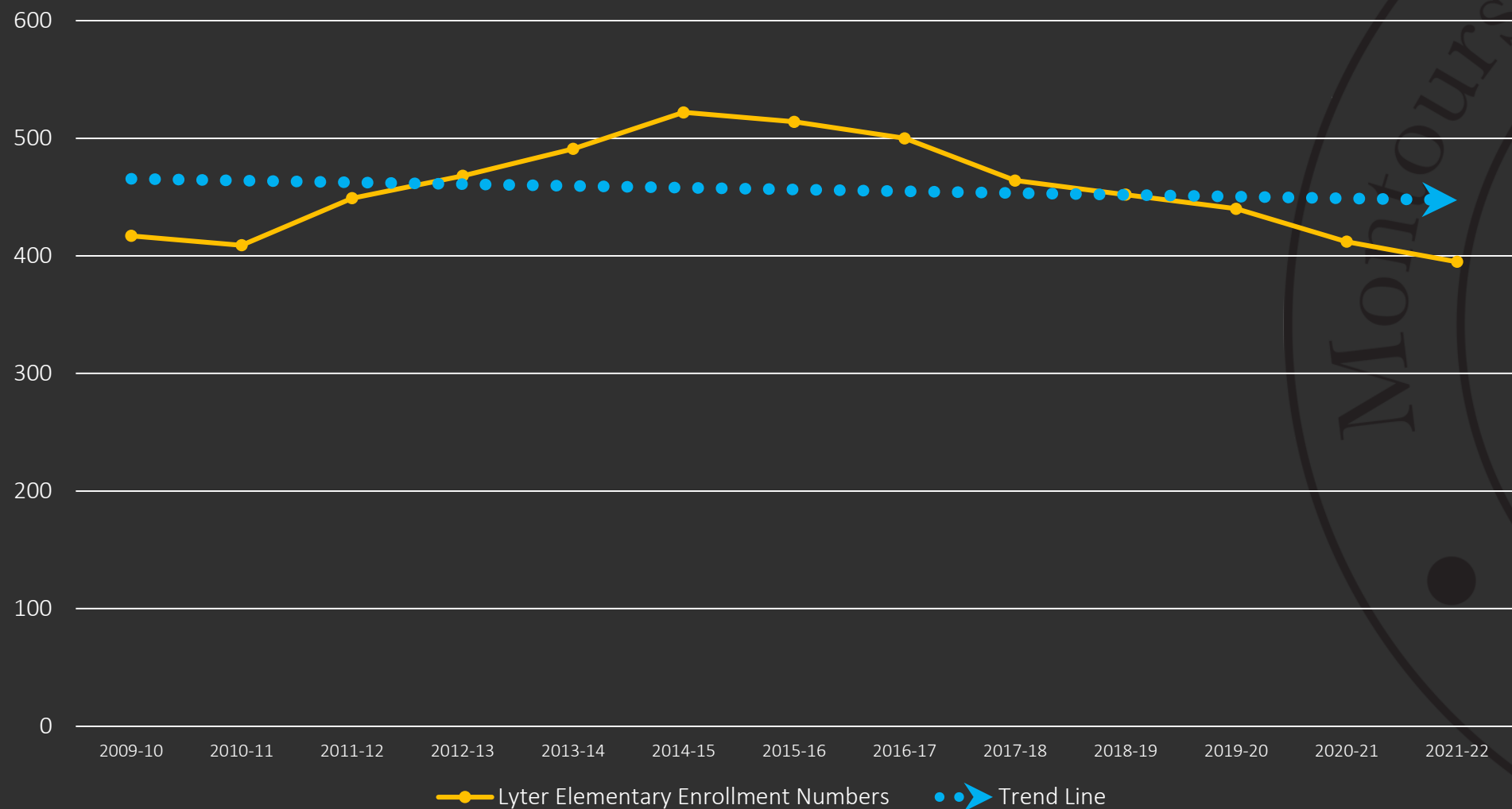
\*As reported to the Pennsylvania Department of Education on October 1 of each school year

# Enrollment Trends

## Lyter Elementary School

Functional Building Capacity = 518

Lyter Elementary Enrollment Numbers\*



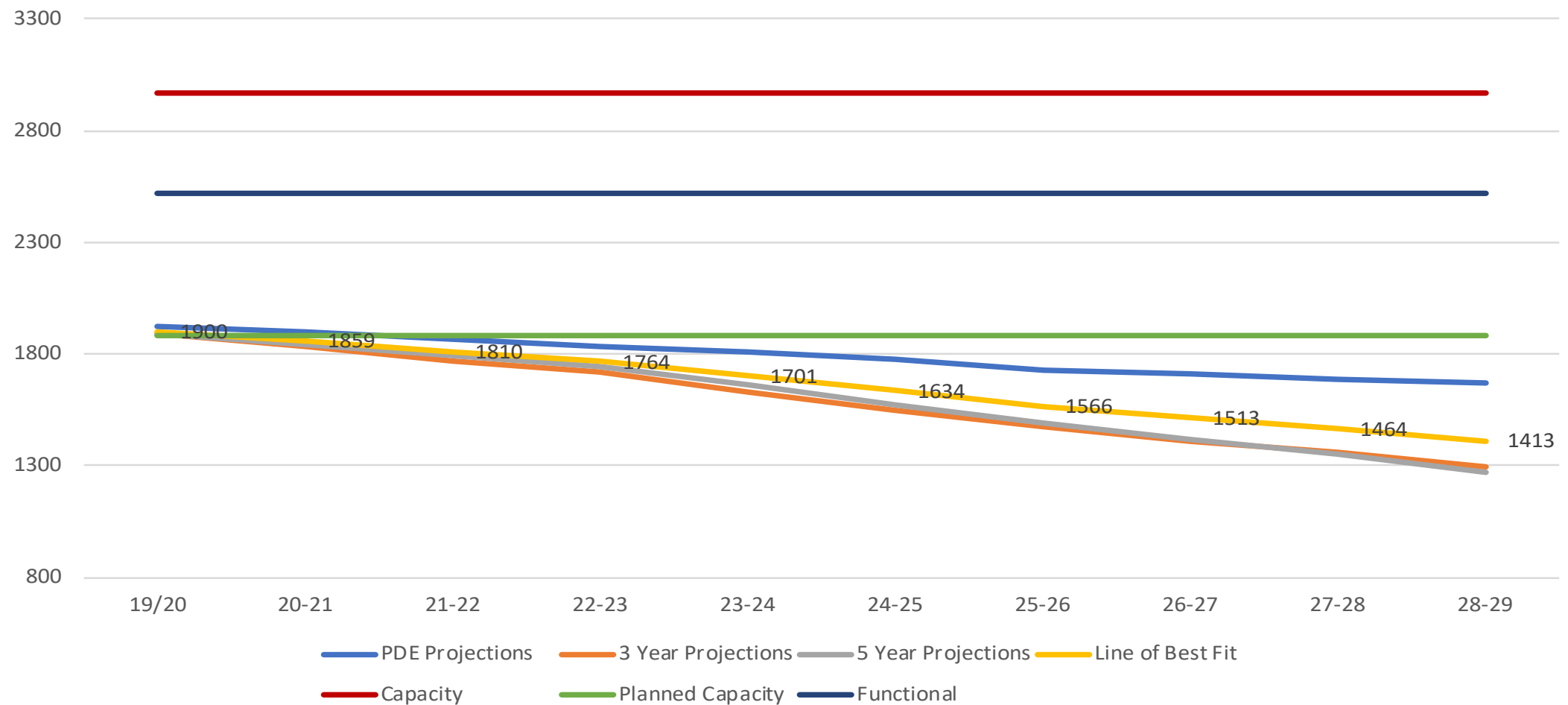
School Year	Enrollment
2009-10	417
2010-11	409
2011-12	449
2012-13	468
2013-14	491
2014-15	522
2015-16	514
2016-17	500
2017-18	464
2018-19	452
2019-20	440
2020-21	412
2021-22	395

\*As reported to the Pennsylvania Department of Education on October 1 of each school year

# Enrollment Trends

## MASD K-12

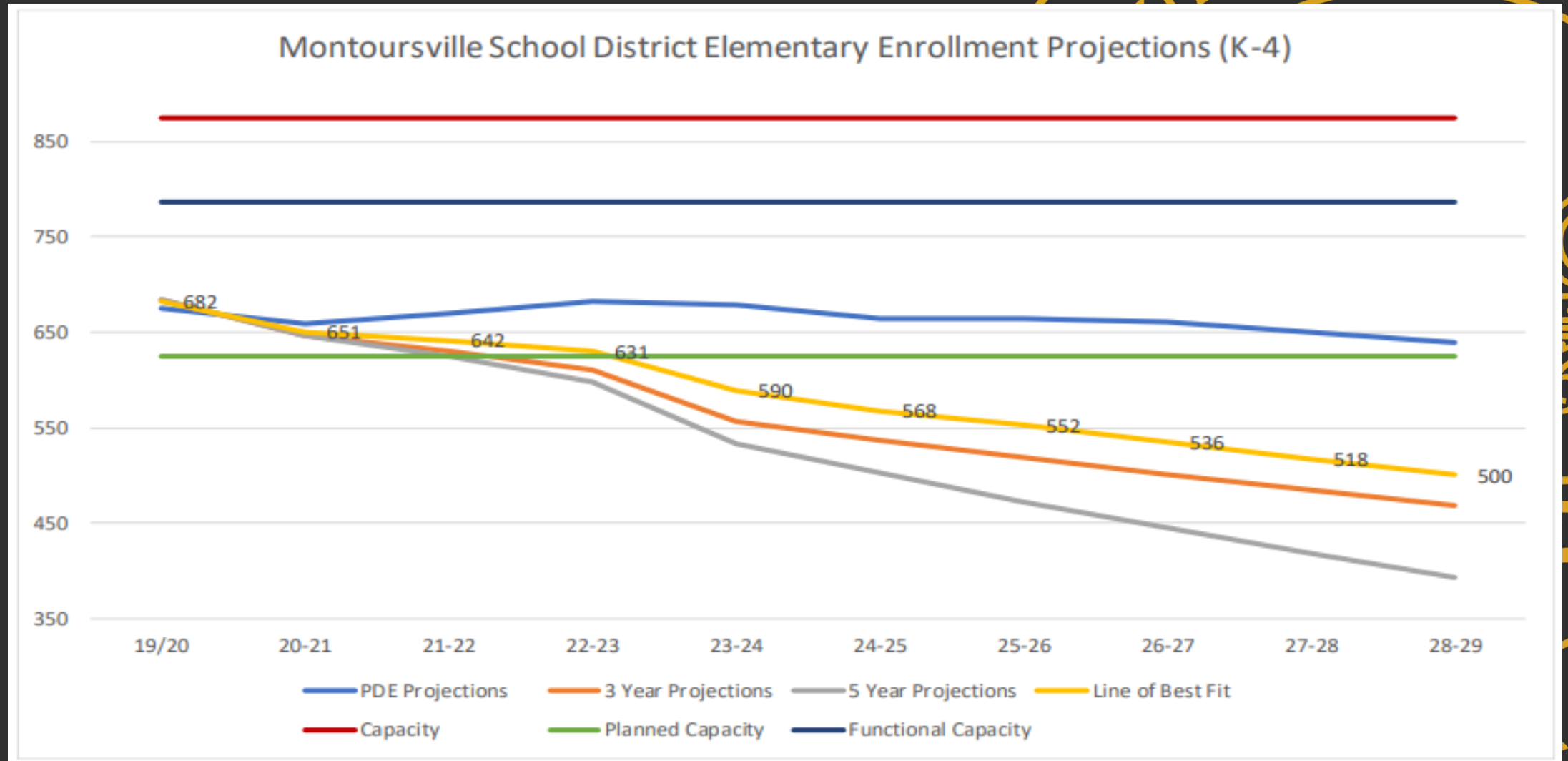
Montoursville Area School District Enrollment Projections (K-12)





# Enrollment Trends

## MASD K-4



Option 00  
\$2+ Million



- No renovations
- No additions
- Maintain both Loyalsock Valley Elementary and Lyter Elementary as-is

The focus of option 0 *is maintaining the current configuration* in the school district of 2 elementary schools, 1 middle school, and 1 high school. This option includes a *5-7 year maintenance plan* at both Loyalsock Valley Elementary and Lyter Elementary schools. The 5-7 year plan has been developed for the district by Mr. Joseph Gnoffo, Director of Building and Grounds. Estimates included in this option are *simply estimates* and do not include actual bids. The estimates are based on today's costs.

Option 00  
\$2+ Million



- Loyalsock Valley Elementary



Main Distribution Panelboard



Main Circuit Breaker



Option 00  
\$2+ Million



- Loyalsock Valley Elementary

Replace Fire Alarm System - \$20,000

Replace Electrical System

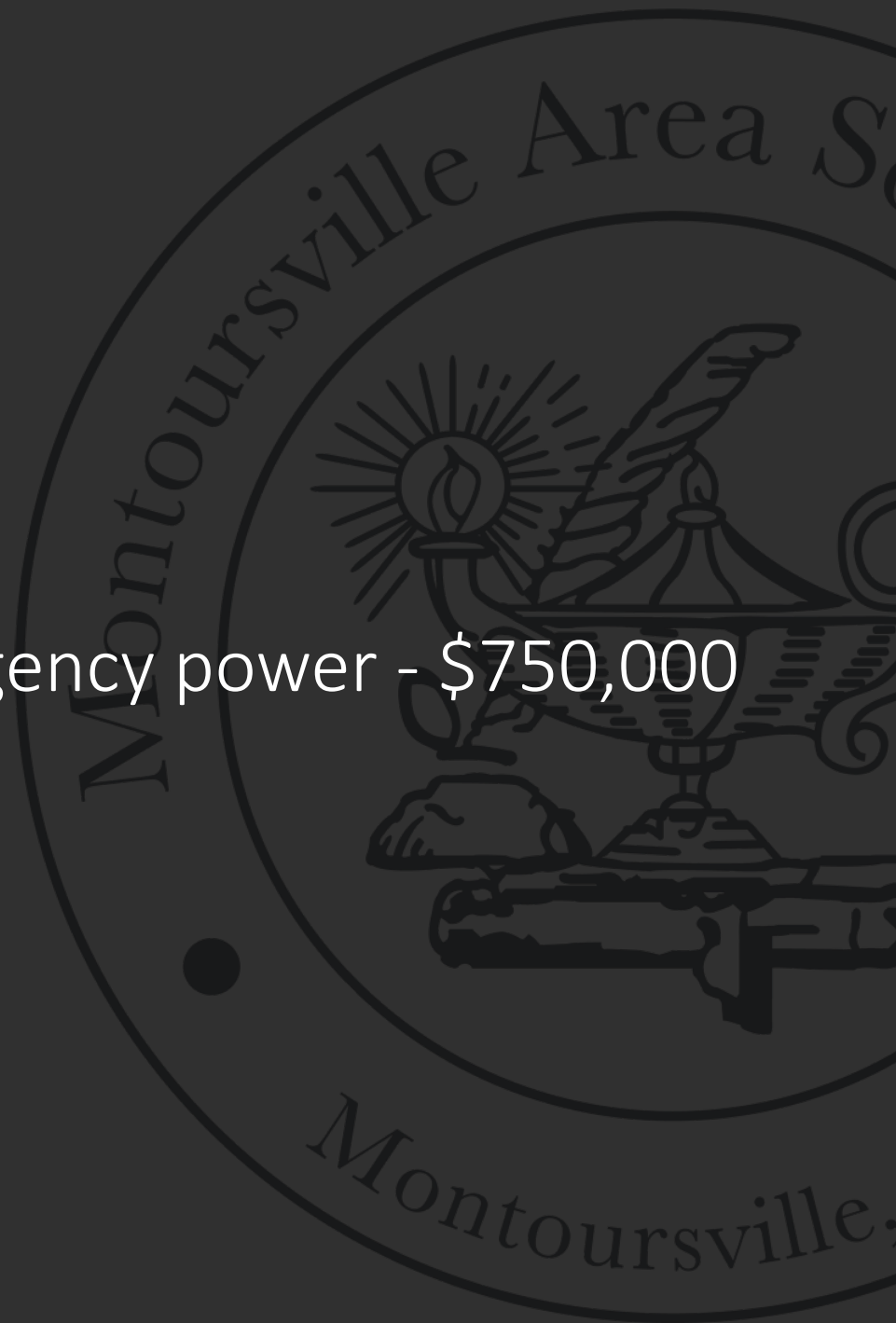
including power distribution and emergency power - \$750,000

Clock & Intercom Replacement - \$75,000

Roof Replacement – \$1.0 million

Casework Replacement - \$250,000

Water Heater Replacement - \$75,000



Option 00  
\$2+ Million



- Lyter Elementary

Replace Fire Alarm System - \$20,000

Clock & Intercom Replacement - \$75,000



Option 00  
\$2+ Million



No Tax Increase  
specific to this  
option

Millage Increase

No Millage Increase



Funding from  
annual  
maintenance  
budget  
  
Funding from  
Capital Reserve

Funding

Capital Reserve  
Annual Budgets



No savings realized

Savings

\$0 in savings



\$2+ Million Capital  
Reserve  
  
Uses annual  
budgets with  
increased costs  
annually  
  
No new debt

Maximum Cost

\$2+ Million



## Option 01

\$16.4 - \$18.1 Million



- Comprehensive renovations and **minor** additions to Loyalsock Valley Elementary School and Mechanical, Electrical and Plumbing system **upgrades** to Lyter Elementary School.
- Maintain current grade configuration

The focus of option 1 is the comprehensive renovations to Loyalsock Valley Elementary School with minor additions. The comprehensive renovations would address not only the aging facility infrastructure but would also include interior renovations to accommodate the functional and educational program needs. In this option **minor additions would be constructed to Loyalsock Valley to address the secure vestibule entrance and main administrative offices including the guidance and nurse suites.** Site upgrades to separate the parent drop-off/pick-up from bus traffic, along with expansion of the hard surface play area are also incorporated. This option also includes mechanical, electrical, and plumbing system upgrades to Lyter Elementary School.

# Option 01

\$16.4 - \$18.1 Million



OPTION 1	Comprehensive Renovations and minor additions to Loyalsock Valley Elementary School and Mechanical, Electrical and Plumbing system upgrades to Lyter Elementary School. Maintain current grade configuration.											
FACILITY	EXST. GRADE CONFIG.	EXISTING AREA	EXIST. FUNC. CAPACITY	CURRENT ENROLL.	PROPOSED SCOPE	PROP. GRADE CONFIG.	SF OF NEW CONSTR.	TOTAL NET SF	ELEM. PLAN. FUNC. CAP.	SEC. PLAN. FUNC. CAP.	TOTAL ESTIMATED COST RANGE	
Loyalsock Valley Elementary School	K-4	40,920	293	252	Renov. & Minor Additions	K-4	1,500	42,420	293		\$ 10,244,547	- \$ 11,269,001
Lyter Elementary School	K-4	70,270	518	433	MEP Upgrades	K-4		70,270	518		\$ 6,182,118	- \$ 6,800,329
C.E. McCall Middle School	5-8	146,500	802	643	Maintain	5-8		146,500		802		
Montoursville Area High School	9-12	208,173	924	610	Maintain	9-12		208,173		924		
<b>Total District</b>		<b>465,863</b>	<b>2,537</b>	<b>1,938</b>			<b>1,500</b>	<b>467,363</b>	<b>811</b>	<b>1,726</b>	<b>16,426,664</b>	<b>\$ 18,069,331</b>



## Option 01

\$16.4 - \$18.1 Million



2023 - .12 increase  
2024 - .24 increase  
2025 - .27 increase

Millage Increase

0.63 total increase  
Generates \$520,000



Funding from \$15  
Million Borrowing  
\$3+ Million from  
Capital Reserve

Funding

Capital Reserve  
Borrowing



No savings realized

Savings

\$0 in savings



\$3+ Million of  
Capital Reserve

\$22.8 Million in  
new debt +  
interest\*

\* interest rates as of 3/22/2022

Maximum Cost

\$25.8+ Million

## Option 02

\$21.3 - \$23.4 Million



- Comprehensive renovations and **major** additions to Loyalsock Valley Elementary School and Mechanical, Electrical and Plumbing system **upgrades** to Lyter Elementary School.
- Maintain current grade configuration.

This option is similar to option 1 in focus and incorporates comprehensive renovations to Loyalsock Valley Elementary School. Instead of minor additions to only include the administration area and entrance, this option incorporates **major additions to meet all needs at the school and incorporates a separate gymnasium, a new properly sized kitchen, and public restroom facilities**. Site upgrades to separate the parent drop-off/pick-up from bus traffic, along with expansion of the hard surface play area are also incorporated. This option also includes mechanical, electrical, and plumbing system upgrades to Lyter Elementary School.

## Option 02

\$21.3 - \$23.4 Million



OPTION 2		Comprehensive renovations and major additions to Loyalsock Valley Elementary School and Mechanical, Electrical and Plumbing system upgrades to Lyter Elementary School. Maintain current grade configuration.									
FACILITY	EXST. GRADE CONFIG.	EXISTING AREA	EXIST. FUNC. CAPACITY	CURRENT ENROLL.	PROPOSED SCOPE	PROP. GRADE CONFIG.	SF OF NEW CONSTR.	TOTAL NET SF	ELEM. PLAN. FUNC. CAP.	SEC. PLAN. FUNC. CAP.	TOTAL ESTIMATED COST RANGE
Loyalsock Valley Elementary School	K-4	40,920	293	252	Renov. & Major Additions	K-4	12,500	53,420	315		\$ 15,110,772 - \$ 16,621,850
Lyter Elementary School	K-4	70,270	518	433	MEP Upgrades	K-4		70,270	518		\$ 6,182,118 - \$ 6,800,329
C.E. McCall Middle School	5-8	146,500	802	643	Maintain	5-8		146,500		802	
Montoursville Area High School	9-12	208,173	924	610	Maintain	9-12		208,173		924	
<b>Total District</b>		<b>465,863</b>	<b>2,537</b>	<b>1,938</b>			<b>12,500</b>	<b>478,363</b>	<b>833</b>	<b>1,726</b>	<b>\$ 21,292,890 \$ 23,422,179</b>

## Option 02

\$21.3 - \$23.4 Million



2023 - .24 increase  
2024 - .30 increase  
2025 - .30 increase

Millage Increase

0.84 total increase  
Generates \$700,000



Funding from \$20  
Million Borrowing  
\$3+ Million from  
Capital Reserve

Funding

Capital Reserve  
Borrowing



No savings realized

Savings

\$0 in savings



\$3+ Million of  
Capital Reserve

\$30.9 Million in  
new debt +  
interest\*

\* interest rates as of 3/22/2022

Maximum Cost

\$33.9+ Million

### Option 03

\$16.5 - \$18.2 Million



- ***Close*** Loyalsock Valley Elementary School and ***consolidate*** to Lyter Elementary School.
- Comprehensive renovations and ***additions*** to Lyter Elementary School.
- Maintain current grade configuration.

This is an option to ***consolidate the Elementary School student body at one location.*** To accomplish this, the larger elementary school (Lyter) is retained and the smaller Elementary School (Loyalsock Valley) is closed. ***Additions for the additional students are constructed at Lyter Elementary School*** and include general classrooms, special education classrooms and other support spaces. In this option, ***Lyter also undergoes a comprehensive renovation*** to address all aging facility infrastructure along with the educational and functional deficiencies identified. Site upgrades for additional parking and on-site parent drop-off/pick-up are included.

## Option 03

\$16.5 - \$18.2 Million



OPTION 3		Close Loyalsock Valley Elementary School and consolidate to Lyter Elementary School. Comprehensive Renovations and Additions to Lyter Elementary School. Maintain current grade configuration.									
FACILITY	EXST. GRADE CONFIG.	EXISTING AREA	EXIST. FUNC. CAPACITY	CURRENT ENROLL.	PROPOSED SCOPE	PROP. GRADE CONFIG.	SF OF NEW CONSTR.	TOTAL NET SF	ELEM. PLAN. FUNC. CAP.	SEC. PLAN. FUNC. CAP.	TOTAL ESTIMATED COST RANGE
Loyalsock Valley Elementary School	K-4	40,920	293	252	Close						
Lyter Elementary School	K-4	70,270	518	433	Renovations & Additions	K-4	21,400	91,670	720		\$ 16,547,508 - \$ 18,202,259
C.E. McCall Middle School	5-8	146,500	802	643	Maintain	5-8		146,500		802	
Montoursville Area High School	9-12	208,173	924	610	Maintain	9-12		208,173		924	
<b>Total District</b>		<b>465,863</b>	<b>2,537</b>	<b>1,938</b>			<b>21,400</b>	<b>446,343</b>	<b>720</b>	<b>1,726</b>	<b>\$ 16,547,508 \$ 18,202,259</b>



## Option 03

\$16.5 - \$18.2 Million



2023 - .12 increase  
2024 - .24 increase  
2025 - .27 increase

Millage Increase

0.63 total increase  
Generates \$520,000



Funding from \$15  
Million Borrowing  
\$3+ Million from  
Capital Reserve

Funding

Capital Reserve  
Borrowing



\$400,000 in annual  
savings through  
reduced staffing,  
maintenance, and  
utilities

Only requires the  
2023 .12 tax  
increase due to  
these savings

Savings

\$400,000 in savings



\$3+ Million of  
Capital Reserve

\$22.8 Million in  
new debt +  
interest\*

\* interest rates as of 3/22/2022

Maximum Cost

\$25.8+ Million

Option 04

\$24.2 - \$26.6 Million



- *Close* Loyalsock Valley Elementary School, *convert* Lyter Elementary School to district wide K-2
- *Primary school* with comprehensive renovations and *construct* additions to C.E. McCall Middle school for grades 3-4.





## Option 04

\$24.2 - \$26.6 Million



This is one of three options that reorganizes the grade groupings to better align with the educational program of the district by *creating a Primary Elementary grade grouping for grades K-2* and an *Intermediate grade grouping for grades 3-5*. To accomplish this, this option incorporates *additions at C.E. McCall Middle School for grades 3-4*. The addition is located adjacent to the existing 5th grade classroom wing to incorporate this grade into the Intermediate School grade grouping. The addition is designed to create a 'school within a school' concept and primarily keeps grades 3-5 in their own area of the building, with students only needing to access the Middle School for Gym, Library and the Stage. The addition includes general classrooms, special education classrooms, Art, Music, STEM, a separate entrance with central office administrative suite, and associated support space. The addition also incorporates a new cafeteria dedicated for grades 3-5 and is located adjacent to the Middle School kitchen so the existing kitchen can serve both schools. Vehicular circulation would include a bus loop off Willow Street and Parent drop-off/pick-up and visitor parking off Fairview Drive. Site improvements would also accommodate outdoor play areas for the 3-5 grade levels. In this option, *Lyter Elementary would be converted to a K-2 Primary School and undergo comprehensive renovations* to address aging facility infrastructure and educational and functional deficiencies (including the incorporation of classroom toilets for grades K-1). Additions would not be needed at Lyter. In this option *Loyalsock Valley Elementary School would be closed*.

## Option 04

\$24.2 - \$26.6 Million



OPTION 4	Close Loyalsock Valley Elementary School, convert Lyter Elementary School to district wide K-2 Primary School and construct additions at C.E. McCall Middle school for grades 3-4. Comprehensive Renovations to Lyter Elementary School.											
FACILITY	EXST. GRADE CONFIG.	EXISTING AREA	EXIST. FUNC. CAPACITY	CURRENT ENROLL.	PROPOSED SCOPE	PROP. GRADE CONFIG.	SF OF NEW CONSTR.	TOTAL NET SF	ELEM. PLAN. FUNC. CAP.	SEC. PLAN. FUNC. CAP.	TOTAL ESTIMATED COST RANGE	
Loyalsock Valley Elementary School	K-4	40,920	293	252	Close							
Lyter Elementary School	K-4	70,270	518	433	Renovations	K-2		70,270	495		\$ 7,772,318 -	\$ 8,549,550
C.E. McCall Middle School	5-8	146,500	802	643	Additions & Minor Renov.	3-8	40,500	187,000	270	802	\$ 16,429,481 -	\$ 18,072,429
Montoursville Area High School	9-12	208,173	924	610	Maintain	9-12		208,173		924		
<b>Total District</b>		<b>465,863</b>	<b>2,537</b>	<b>1,938</b>			<b>40,500</b>	<b>465,443</b>	<b>765</b>	<b>1,726</b>	<b>\$ 24,201,799</b>	<b>\$ 26,621,979</b>

Option 04

\$24.2 – \$26.6 Million



## Option 05

\$37.6 - \$41.3 Million



- **Close** Lyter Elementary School, **convert** Loyalsock Valley Elementary School to district wide K-2
- **Primary School** with comprehensive renovations and major additions, and **construct** additions to C.E. McCall Middle school for grades 3-4.

Option 5 is similar to option 4 for grades 3-5. In option 5 **Loyalsock Valley Elementary School would be converted to a K-2 Primary School and Lyter Elementary School would be closed.** To accommodate the entire K-2 student body, **additions would be needed at Loyalsock Valley.** The additions would include the common spaces incorporated in Option 2 (secure entrance, administrative suite, gymnasium, kitchen, and public restrooms) along with additional classroom and support space needed to support the entire K-2 student body. Loyalsock Valley would also undergo comprehensive renovations to address all existing needs.

# Option 05

\$37.6 - \$41.3 Million



OPTION 5	Close Lyter Elementary School, convert Loyalsock Valley Elementary School to district wide K-2 Primary School, and construct additions at C.E. McCall Middle school for grades 3-4. Additions and Comprehensive Renovations to Loyalsock Valley Elementary School.											
FACILITY	EXST. GRADE CONFIG.	EXISTING AREA	EXIST. FUNC. CAPACITY	CURRENT ENROLL.	PROPOSED SCOPE	PROP. GRADE CONFIG.	SF OF NEW CONSTR.	TOTAL NET SF	ELEM. PLAN. FUNC. CAP.	SEC. PLAN. FUNC. CAP.	TOTAL ESTIMATED COST RANGE	
Loyalsock Valley Elementary School	K-4	40,920	293	252	Renov. & Major Additions	K-2		40,920	495		\$ 21,133,621	- \$ 23,246,983
Lyter Elementary School	K-4	70,270	518	433	Close							
C.E. McCall Middle School	5-8	146,500	802	643	Additions & Minor Renov.	3-8	40,500	187,000	270	802	\$ 16,429,481	- \$ 18,072,429
Montoursville Area High School	9-12	208,173	924	610	Maintain	9-12		208,173		924		
<b>Total District</b>		<b>465,863</b>	<b>2,537</b>	<b>1,938</b>			<b>40,500</b>	<b>436,093</b>	<b>765</b>	<b>1,726</b>	<b>\$ 37,563,102</b>	<b>\$ 41,319,412</b>

Option 05

\$37.6 – \$41.3 Million





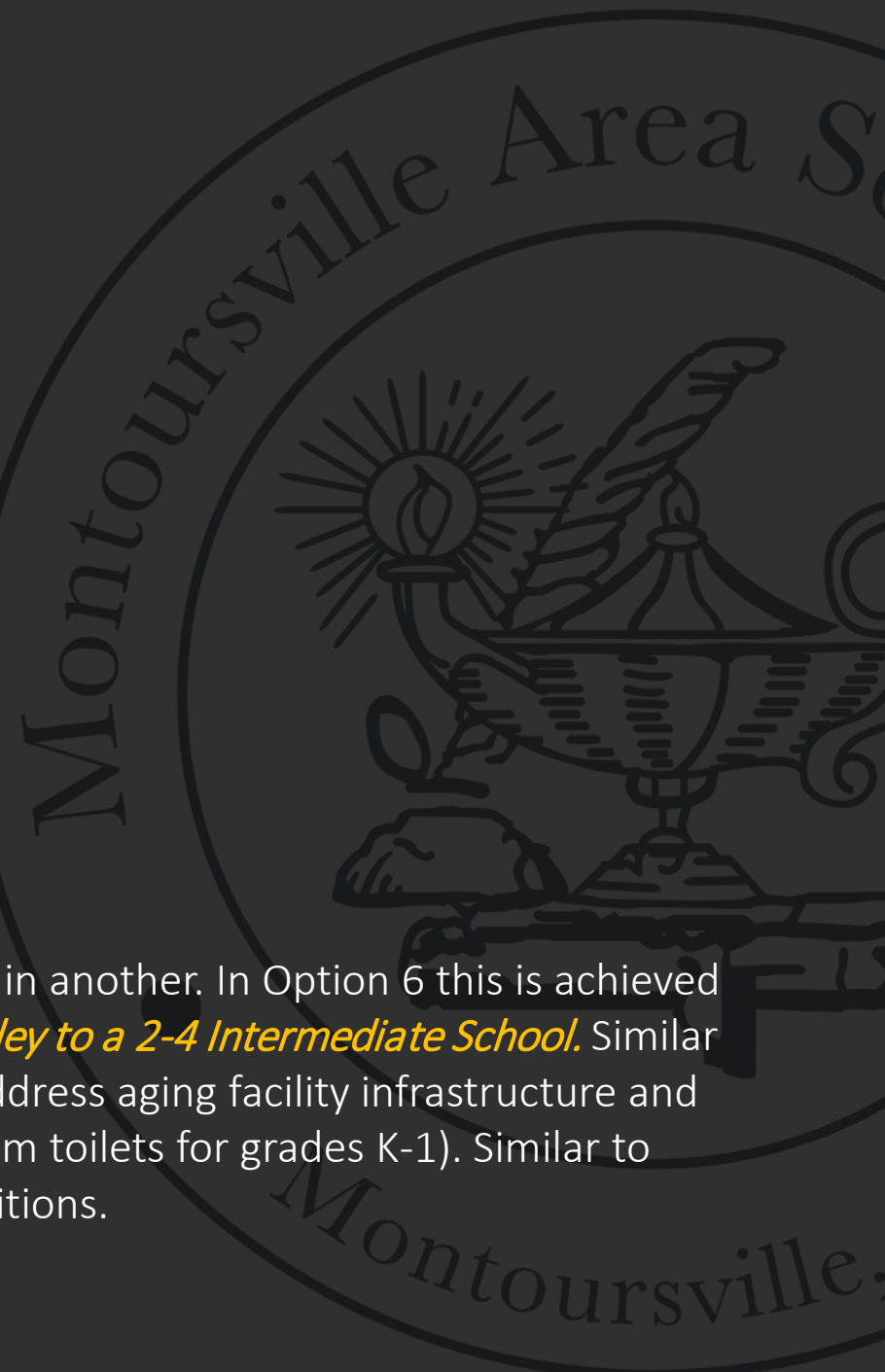
## Option 06

\$22.9 - \$25.2 Million



- **Convert** Loyalsock Valley Elementary School to district wide 3-4 Intermediate School and Lyter Elementary School to district wide K-2 Primary School.
- Comprehensive **renovations** and **major additions** to Loyalsock Valley Elementary School and comprehensive **renovations** to Lyter Elementary School.

Option 6 is another option that joins grades K-2 in one building and grades 3-4 in another. In Option 6 this is achieved by **converting Lyter Elementary School to a K-2 Primary School and Loyalsock Valley to a 2-4 Intermediate School**. Similar to Option 4, Lyter Elementary would undergo comprehensive renovations to address aging facility infrastructure and educational and functional deficiencies (including the incorporation of classroom toilets for grades K-1). Similar to Option 2, Loyalsock Valley would undergo comprehensive renovations and additions.



## Option 06

\$22.9 - \$25.2 Million



OPTION 6	Convert Loyalsock Valley Elementary School to district wide 3-4 Intermediate School and Lyter Elementary School to district wide K-2 Primary School. Comprehensive renovations and major additions to Loyalsock Valley Elementary School and Comprehensive Renovations to Lyter Elementary School.											
FACILITY	EXST. GRADE CONFIG.	EXISTING AREA	EXIST. FUNC. CAPACITY	CURRENT ENROLL.	PROPOSED SCOPE	PROP. GRADE CONFIG.	SF OF NEW CONSTR.	TOTAL NET SF	ELEM. PLAN. FUNC. CAP.	SEC. PLAN. FUNC. CAP.	TOTAL ESTIMATED COST RANGE	
Loyalsock Valley Elementary School	K-4	40,920	293	252	Renov. & Major Additions	3-4	12,500	53,420	270		\$ 15,110,772	- \$ 16,621,850
Lyter Elementary School	K-4	70,270	518	433	Renovations	K-2		70,270	495		\$ 7,772,318	- \$ 8,549,550
C.E. McCall Middle School	5-8	146,500	802	643	Maintain	5-8		146,500		802		
Montoursville Area High School	9-12	208,173	924	610	Maintain	9-12		208,173		924		
<b>Total District</b>		<b>465,863</b>	<b>2,537</b>	<b>1,938</b>			<b>12,500</b>	<b>478,363</b>	<b>765</b>	<b>1,726</b>	<b>\$ 22,883,091</b>	<b>\$ 25,171,400</b>



Option 06

\$22.9 – \$25.2 Million



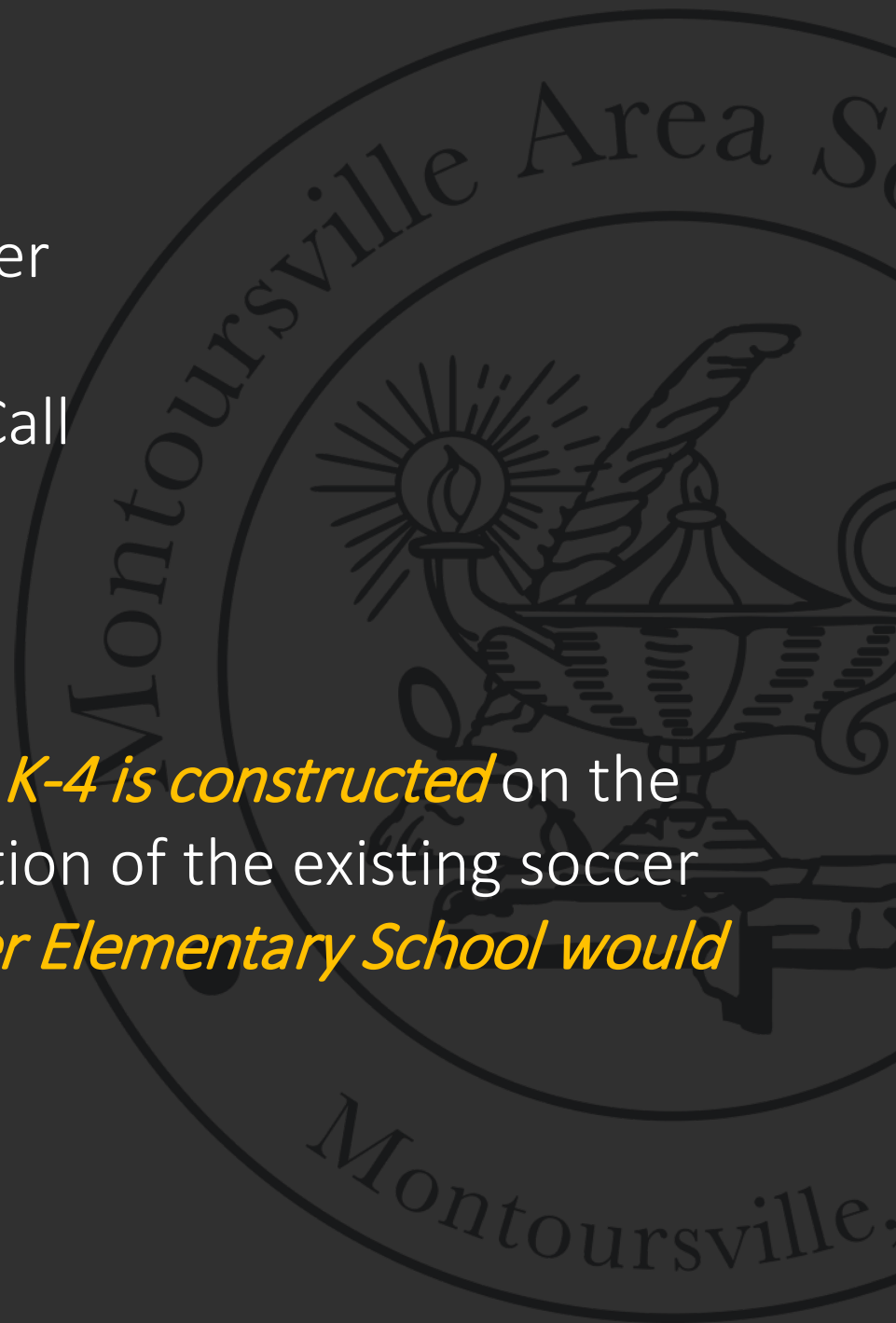
## Option 07

\$33.0 - \$36.3 Million



- **Close** Loyalsock Valley Elementary School and Lyter Elementary School.
- **Construct** new K-4 Elementary School at C.E. McCall Middle School site.
- Maintain current grade configuration.

In this option, *a new Elementary school for grades K-4 is constructed* on the existing C.E. McCall Middle School site in the location of the existing soccer fields. *Loyalsock Valley Elementary School and Lyter Elementary School would be closed.*



# Option 07

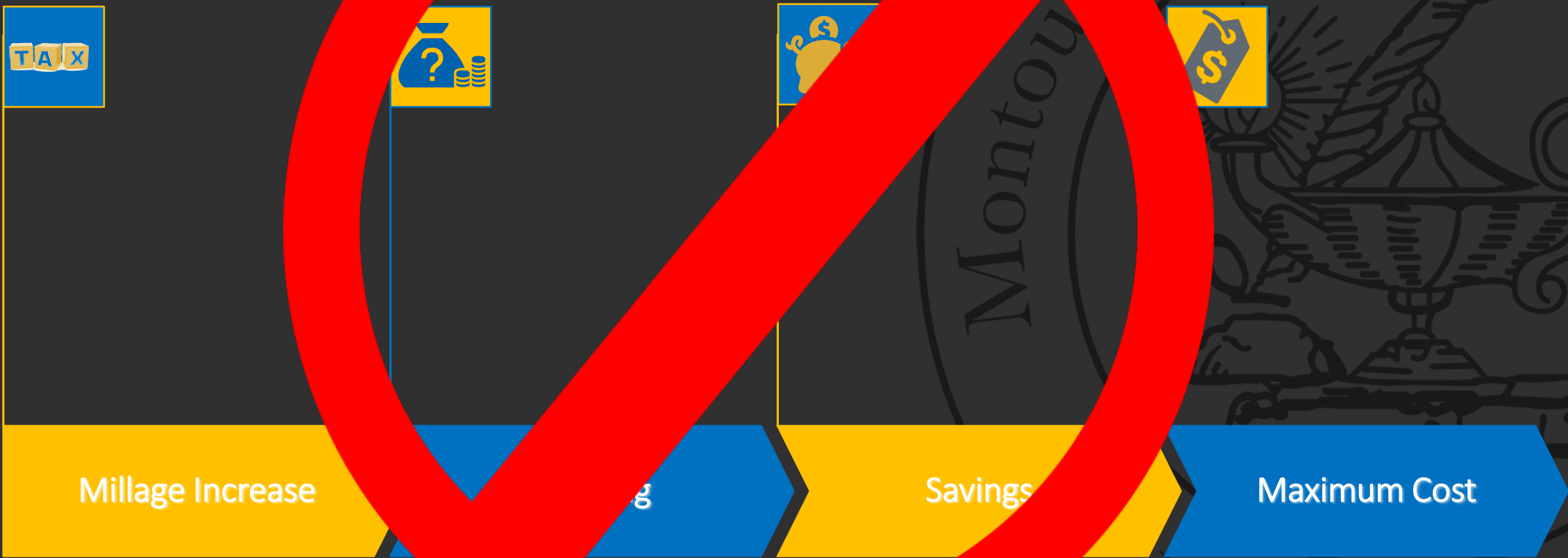
\$33.0 - \$36.3 Million

new

OPTION 7											
Close Loyalsock Valley Elementary School and Lyter Elementary School. Construct new K-4 Elementary School at C.E. McCall Middle School site. Maintain current grade configuration.											
FACILITY	EXST. GRADE CONFIG.	EXISTING AREA	EXIST. FUNC. CAPACITY	CURRENT ENROLL.	PROPOSED SCOPE	PROP. GRADE CONFIG.	SF OF NEW CONSTR.	TOTAL SF	ELEM. PLAN. FUNC. CAP.	SEC. PLAN. FUNC. CAP.	TOTAL ESTIMATED COST RANGE
New Elementary School					New Construction	K-4	98,500	98,500	720		\$ 32,971,856 - \$ 36,269,042
Loyalsock Valley Elementary School	K-4	40,920	293	252	Close						
Lyter Elementary School	K-4	70,270	518	433	Close						
C.E. McCall Middle School	5-8	146,500	802	643	Maintain	5-8		146,500		802	
Montoursville Area High School	9-12	208,173	924	610	Maintain	9-12		208,173		924	
<b>Total District</b>		<b>465,863</b>	<b>2,537</b>	<b>1,938</b>			<b>98,500</b>	<b>453,173</b>	<b>720</b>	<b>1,726</b>	<b>\$ 32,971,856 \$ 36,269,042</b>

Option 07

\$33.0 – \$36.3 Million



## Option 08

\$9.2 - \$10.2 Million



- **Replace** entire HVAC system with new system with air conditioning at Loyalsock Valley Elementary and Lyter Elementary
- Maintain current grade configuration
- If Option 8 is selected, Option 0 would need to be added

In this option, Loyalsock Valley Elementary will have a ***new electrical service installed, new HVAC system for heating and cooling, new exhaust fans for ventilation of toilet rooms and storage rooms, new control system,*** and ceilings removed and replaced. Lyter Elementary will receive the same except for a new electrical service. Option 0 needs to be completed with this option.

# Option 08

\$9.2 - \$10.2 Million



OPTION 8 HVAC upgrades to Loyalsock Valley Elementary School and Lyter Elementary School. Maintain current grade configuration.											
FACILITY	EXST. GRADE CONFIG.	EXISTING AREA	EXIST. FUNC. CAPACITY	CURRENT ENROLL.	PROPOSED SCOPE	PROP. GRADE CONFIG.	SF OF NEW CONSTR.	TOTAL NET SF	ELEM. PLAN. FUNC. CAP.	SEC. PLAN. FUNC. CAP.	TOTAL ESTIMATED COST RANGE
Loyalsock Valley Elementary School	K-4	40,920	293	252	HVAC Upgrades	K-4	-	40,920	293		\$ 3,731,788 - \$ 4,104,967
Lyter Elementary School	K-4	70,270	518	433	HVAC Upgrades	K-4		70,270	518		\$ 5,508,339 - \$ 6,059,173
C.E. McCall Middle School	5-8	146,500	802	643	Maintain	5-8		146,500		802	
Montoursville Area High School	9-12	208,173	924	610	Maintain	9-12		208,173		924	
<b>Total District</b>		<b>465,863</b>	<b>2,537</b>	<b>1,938</b>			<b>-</b>	<b>465,863</b>	<b>811</b>	<b>1,726</b>	<b>9,240,127 \$ 10,164,139</b>

Option 08

\$9.2 - \$10.2 Million



2023 - .09 increase  
2024 - .09 increase  
2025 - .09 increase

Millage Increase

0.27 total increase  
Generates \$225,000



Funding from \$7  
Million Borrowing  
\$3+ Million from  
Capital Reserve  
Funding from  
annual  
maintenance  
budget

Funding

Capital Reserve  
Borrowing  
Annual Budgets



No savings realized

Savings

\$0 in savings



\$3+ Million of  
Capital Reserve  
\$10.3 Million in  
new debt +  
interest\*  
\$2+ million from  
Option 0  
\* interest rates as of 3/22/2022

Maximum Cost

\$15.3+ Million



# In Summary

Loyalsock Valley Elementary School

Lyter Elementary School





# Project Option Summary

## Elementary Schools



\$2+ million  
Savings = \$0  
Millage = 0.0

\$25.8+ million  
Savings = \$0  
Millage = 0.63

\$33.9+ million  
Savings = \$0  
Millage = 0.85

\$25.8+ million  
Savings = \$400 K/yr  
Millage = 0.63

\$24.2-\$26.6 million +  
interest  
*NOT UNDER  
CONSIDERATION*

# Project Option Summary

## Elementary Schools



Close Lyter Elementary and convert Loyalsock Valley Elementary to district wide K-2 Primary School Construct additions at C.E. McCall for grades 3-4. Additions and comprehensive renovations to Loyalsock Valley Elementary

OPTION 05

\$37.6-\$41.3 million + interest  
*NOT UNDER CONSIDERATION*



Convert Loyalsock Valley Elementary to district wide 3-4 Intermediate School and Lyter Elementary to district wide K-2 Primary School. Comprehensive renovations and major additions to Loyalsock Valley Elementary Comprehensive renovations to Lyter Elementary

OPTION 06

\$22.9-\$25.2 million + interest  
*NOT UNDER CONSIDERATION*



Close Loyalsock Valley Elementary and Lyter Elementary Construct a new K-4 Elementary School at C.E. McCall Middle School site Maintain current grade configuration

OPTION 07

\$33.0-\$36.3 million + interest  
*NOT UNDER CONSIDERATION*



Replace entire HVAC system with new system with air conditioning at Loyalsock Valley Elementary and Lyter Elementary Option 0 needs to be completed as part of this option

OPTION 08

\$15.3+ million  
Savings = \$0  
Millage = 0.27

# Next Steps

*School Tours* – Sometime between  
June 9<sup>th</sup> and June 24<sup>th</sup> – must register

Decision by Board – Fall of 2022



# Public Comment

